



SUPPORT FOR ENGINEERING AND ARCHITECTURAL FIRMS

## PROJECT ANALYSIS AND APPROVAL PROCESS

Techno Metal Post's Engineering Department provides support to both engineering and architectural firms throughout the evaluation, design, and on-site implementation process. Our engineering department can also assist its clients across various sectors including residential, commercial, or industrial. Techno Metal Post's engineers are authorized to issue compliance documents, in all municipalities, where our products are available.



ENGINEERING SERVICES

### CLIENT BENEFITS

- ✓ DESIGN ACCORDING TO CONSTRUCTION STANDARDS
- ✓ TECHNICAL ASSISTANCE
- ✓ RISK REDUCTION

HELICAL PILE FOUNDATIONS

# TECHNO METAL POST SUPPORTS YOUR PROJECTS

VISIT OUR WEBSITE  
[technometalpost.com](http://technometalpost.com)

## INDUSTRIAL

## THE ADVANTAGES



### INSTALLATION EQUIPMENT

Our mechanical engineering team designs and manufactures specialized equipment uniquely for installing helical piles. The equipment determines, in real-time, the depth required to ensure project stability.



### SIMPLE & QUICK

Techno Metal Post's helical piles can be installed within just a few hours. Since no excavation and/or concrete is required, you can start building as soon as the helical pile installation is completed.



### WORLDWIDE CERTIFIED TECHNOLOGY

Our technology is certified and recognized by qualified officials in several countries. Our quality and reliability are also recognized by thousands of construction professionals and clients around the world.



### STRONG, SOLID, AND DURABLE

Our helical piles are designed according to the highest engineering and quality standards. Therefore, their ability to support heavy loads is guaranteed.

#### MEETS CONSTRUCTION STANDARDS



#### GUARANTEED STABILITY



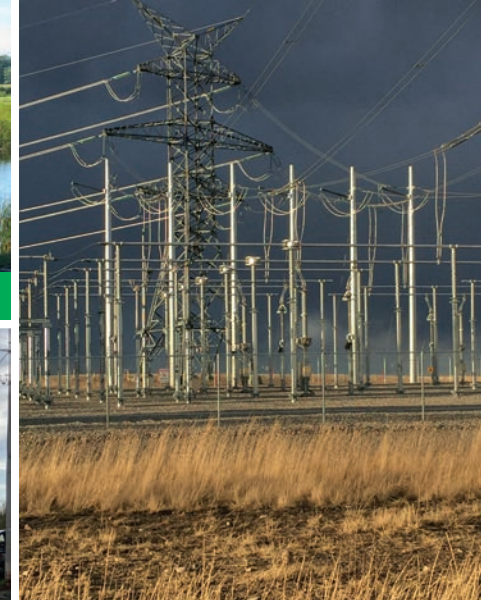
## DIFFERENT PROJECT TYPES



SOLAR PANELS



SILOS



POWER SUBSTATIONS



SUPPORTS FOR EQUIPMENT



DUST EXTRACTORS



IAPMO UES ER-481



**TECHNO METAL POST'S HELICAL PILES  
ARE CERTIFIED AND GUARANTEED**