

## Shaft

Wall Thickness	0.216" (5.49 mm)
Round HSS Outside Diameter	3.5" (88.9 mm)
Available Standard Lengths	5'-3" (1.6 m) / 7'-0" (2.1 m) / 10'-6" (3.2 m)

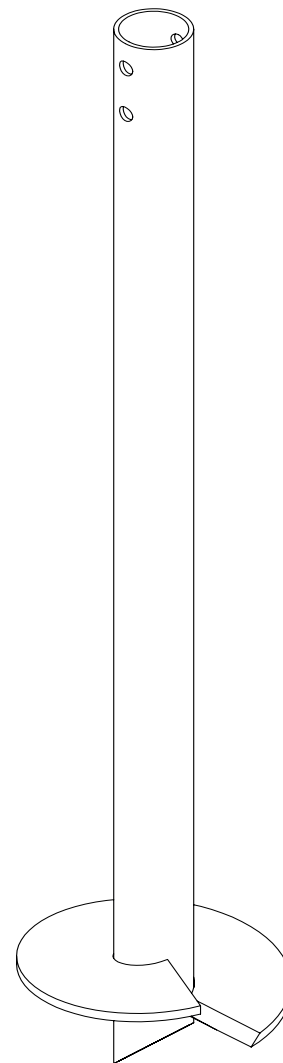
## Load Specifications

Max. Installation Torque :	
with <b>Regular</b> and <b>Expanded</b> coupling	8,509 ft-lb (11,527 N-m)
with <b>Reinforced</b> coupling	11,000 ft-lb (14,902 N-m)
Max. Allowable Capacity*	29.8 kips (132.4 kN) to 33 kips (146.7 kN)

\* Higher load ratings could be considered with site-specific engineering.

## Technical Specifications

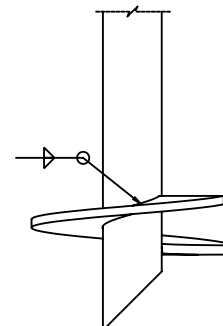
Commonly Used Structure	Heavy Residential Light to Medium Commercial Industrial
Code Evaluation	Listed per ICC-ES (ESR-3418) / IAPMO-UES (ER-481)
Standard Steel	ASTM A500 Grade C Fy=51 ksi min (350 MPa)
Black Steel Design Life	50 years per AC358
Coating	Galvanized or Black Steel
Galvanization Compliance	ASTM A123/A123M
Additional Corrosion Protection	Cathodic Protection System available



## Helix

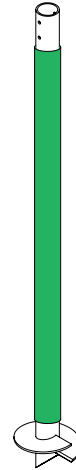
Pitch	3" (76.2 mm) / 5" (127 mm)
Thickness	0.5" (12.7 mm)
Standard Steel	CSA G40.21-44W Fy=44 ksi min (300 MPa)
Coating	Galvanized or Black Steel
Multiple Welded Helix	Available
Helix Size*	8" (203 mm) to 24" (610 mm)

\* Other sizes available upon request.

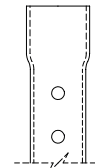
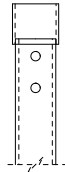


## Sleeve (Available)

Function Utility	Protection against soil movements
Wall Thickness	1/16" (1.6 mm)
Outside Diameter	± 3.75" (± 95.2 mm)
Length	± 66" (± 1.67 m)
Weight	± 1.52 lb (± 0.69 kg)
Material	HDPE
Color	Green



## Outside Couplings



	Regular	Reinforced	Expanded
Assembly	Welded	Welded	-
Wall Thickness	0.226" (5.74 mm)	0.226" (5.74 mm)	0.188" (4.78 mm)
Round HSS Outside Diameter	4" (101.6 mm)	4" (101.6 mm)	4" (101.6 mm)
Standard Steel	ASTM A500 Grade C Fy=51 ksi min (350 MPa)	ASTM A500 Grade C Fy=51 ksi min (350 MPa)	ASTM A500 Grade C Fy=51 ksi min (350 MPa)
Length*	3.5" (88.9 mm)	8.75" (222.3 mm)	2.5" (63.5 mm)

\* Factory welded outside coupling length or on site.

## Pile Caps

Wood Structure Connectors	Pages 37, 38, 41, 42, 45, 46, 51, 52, 55, 56, 59-62, 64-66
Steel Structure Connectors	Pages 63, 67, 68
Concrete Construction Connectors	Pages 63, 69-72

## Foundation Repair Brackets

Concrete Wall	Page 74
Concrete Masonry Unit (CMU) Wall	Pages 75-77
Interior Concrete Wall	Page 78