

## Shaft

|                            |  |
|----------------------------|--|
| Wall Thickness             | 0.258" (6.55 mm)                               |
| Round HSS Outside Diameter | 5.563" (141.3 mm)                              |
| Available Standard Lengths | 5'-3" (1.6 m) / 7'-0" (2.1 m) / 10'-6" (3.2 m) |

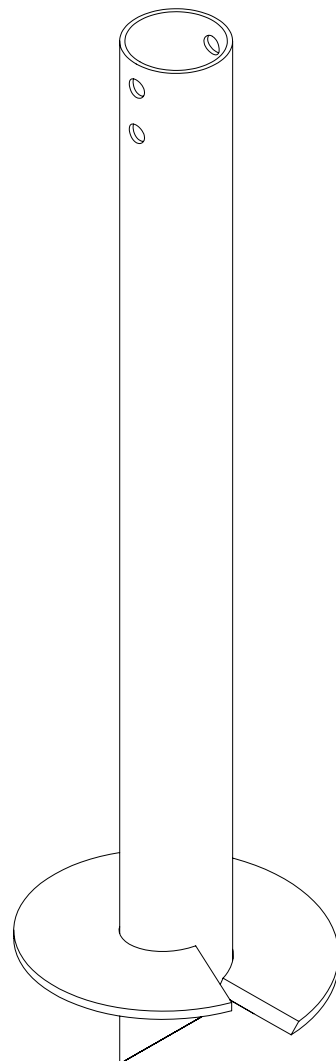
## Load Specifications

|                          |  |
|--------------------------|--|
| Max. Installation Torque | 14,500 ft-lb (19,700 N-m)                |
| Max. Allowable Capacity* | 30 kips (133.3 kN) to 50 kips (222.2 kN) |

\* Higher load ratings could be considered with site-specific engineering.

## Technical Specifications

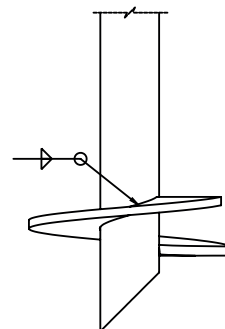
|                                 |  |
|---------------------------------|--|
| Commonly Used Structure         | Heavy Residential                            |
|                                 | Light to Heavy Commercial                    |
|                                 | Industrial                                   |
| Standard Steel                  | ASTM A500 Grade C<br>Fy=51 ksi min (350 MPa) |
| Black Steel Design Life         | 50 years per AC358                           |
| Coating                         | Galvanized or Black Steel                    |
| Galvanization Compliance        | ASTM A123/A123M                              |
| Additional Corrosion Protection | Cathodic Protection System available         |



## Helix

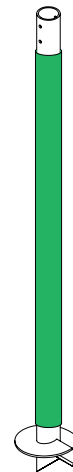
|                       |   |
|-----------------------|---|
| Pitch                 | 5" (127 mm)                               |
| Thickness             | 0.5" (12.7 mm)                            |
| Standard Steel        | CSA G40.21-44W<br>Fy=44 ksi min (300 MPa) |
| Coating               | Galvanized or Black Steel                 |
| Multiple Welded Helix | Available                                 |
| Helix Size*           | 12" (305 mm) to 24" (610 mm)              |

\* Other sizes available upon request.

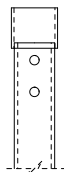


## Sleeve (Available)

|                  |                                   |
|------------------|-----------------------------------|
| Function Utility | Protection against soil movements |
| Wall Thickness   | 1/16" (1.6 mm)                    |
| Outside Diameter | ± 5.75" (± 146 mm)                |
| Length           | ± 66" (± 1.67 m)                  |
| Weight           | ± 3.11 lb (± 1.41 kg)             |
| Material         | HDPE                              |
| Color            | Green                             |



## Outside Couplings



### Regular

|                            |  |
|----------------------------|--|
| Assembly                   | Welded                                       |
| Wall Thickness             | 0.188" (4.78 mm)                             |
| Round HSS Outside Diameter | 6" (152.4 mm)                                |
| Standard Steel             | ASTM A500 Grade C<br>Fy=51 ksi min (350 MPa) |
| Length*                    | 3" (76.2 mm)                                 |

\* Factory welded outside coupling length or on site.

## Pile Caps

|                                  |                  |
|----------------------------------|------------------|
| Wood Structure Connectors        | Pages 64, 65     |
| Steel Structure Connectors       | Page 63          |
| Concrete Construction Connectors | Pages 63, 70, 71 |